

# TOOLS FOR ARCHITECTS...



**i n n o<sup>fi</sup>**

**AVARTE**

**SHANGHAI AVARTE FURNITURE CO.,LTD.**

#6,Lane 865,Shenglong road,  
Jiufu Eco&Dev. zone, Jiuting town,  
Songjiang district, Shanghai, China  
Tel:+86-21-55299955  
Fax:+86-21-67691407

It all begun 40 years ago...

Inno, since 1975.

Be inspired by the Inno collection, a mixture of proven classics and fresh novelties

The aim of the collection is to provide architects and interior designers different looking and useful interior objects as tools for modern interiors.

"Tools for architects..." is a teaser to give an idea of our collection. More information in separate brochures, catalogues and our webpage.



Harri Korhonen, Interior architect



Mikko Laakkonen, Designer



Jouni Leino, Interior architect



# AURA

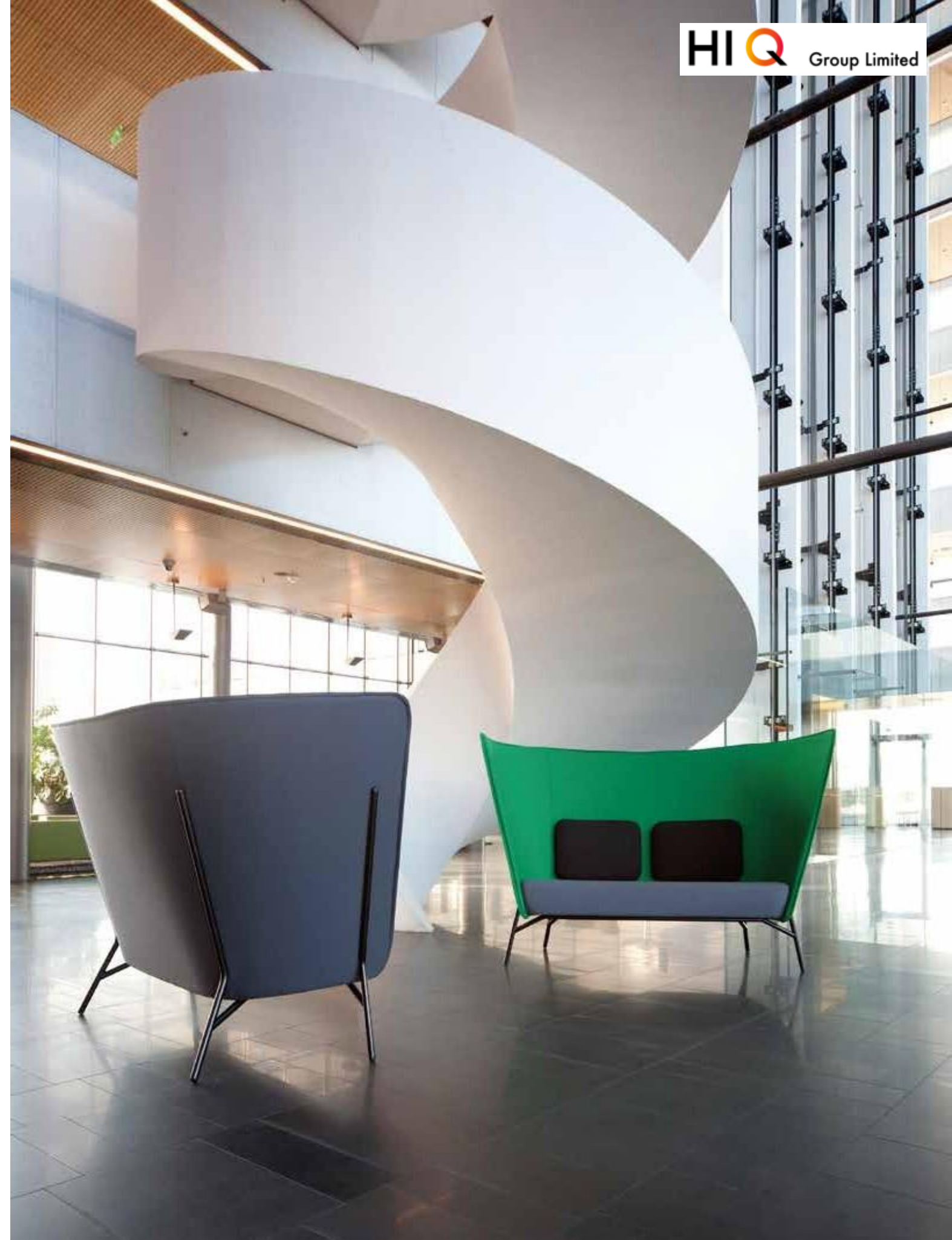


reddot design award  
best of the best 2013



Aura is a harmonious and cozy 2-seater sofa, it surrounds you and is perfect for creating peaceful interiors. Due to its high back the tempting and sympathetic Aura also works as a divider. The disclosed structure gives Aura a characteristic identity.

Design: Mikko Laakkonen





# AURA

Aura sofa is accompanied with a sympathetic lounge chair. Mix the sofa and the chair together to form harmonious and cozy Aura groups or use the chair separately to form lower sitting groups. Also to be used as a side chair. The back of the Aura chair is slightly lower allowing more visibility.

Design: Mikko Laakkonen



# AURA



AURA 2TH



AURA 1TH



AURA 1TL



AURA 2TL

Aura sofa with a low back is the newest member of the award-winning Aura family. The low sofa fits together with the low chair. The sympathetic lounge chair with its higher back fits naturally together with the high Aura sofa.

Design: Mikko Laakkonen



TABLE: BONDO



# AURA WOOD



Aura Wood is a natural extension to the Aura family. With its wooden frame and standard height Aura will be entering the use range of regular sofas yet preserving the characteristics of the award-winning Aura series. Aura product family has been granted the internationally recognized GOOD DESIGN™ 2015 Award

Design: Mikko Laakkonen



AURA WOOD CHAIR







# LAB XL

Lab XL is a unique and perfect lounge chair for meeting areas, lobby areas, hotels and people who appreciate high quality in home environment. The generous and comfortable chair is available in two heights. Lab XL chair has been granted the internationally recognized GOOD DESIGN™ 2017 Award

The Lab family is designed as a part of the cozy office concept that was developed by Inno six years ago. The aim of this concept is to bring out the soft values from the traditional homes to public spaces. Earlier models of the Lab family was granted GOOD DESIGN™ award in 2015.

Design: Harri Korhonen



LAB XL HIGH



LAB XL LOW





LAB XL STOOL

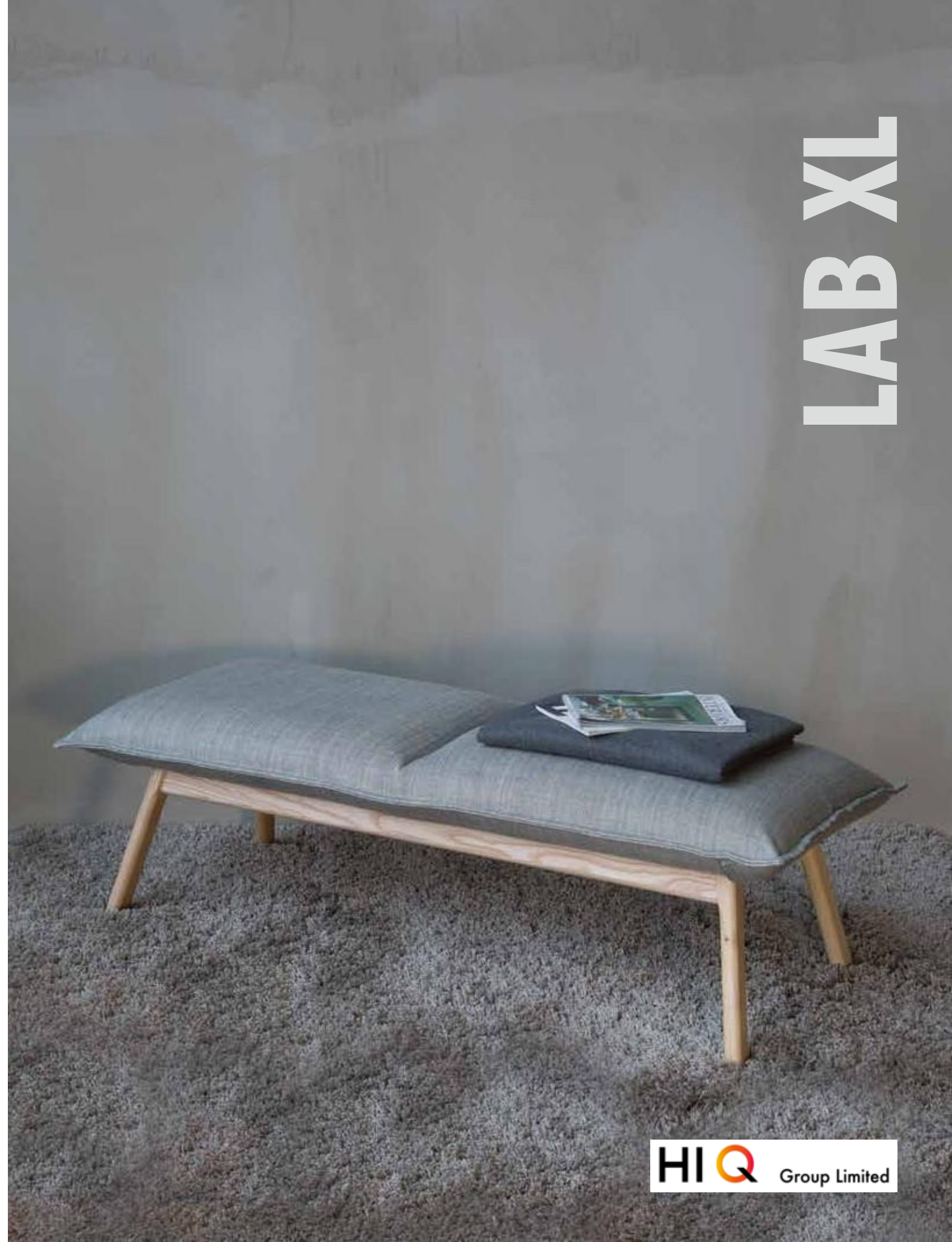


LAB XL BENCH

Lab XL bench and Lab XL stool, both have the same cozy pillow shape that can be found in all Lab XL products.

Design: Harri Korhonen

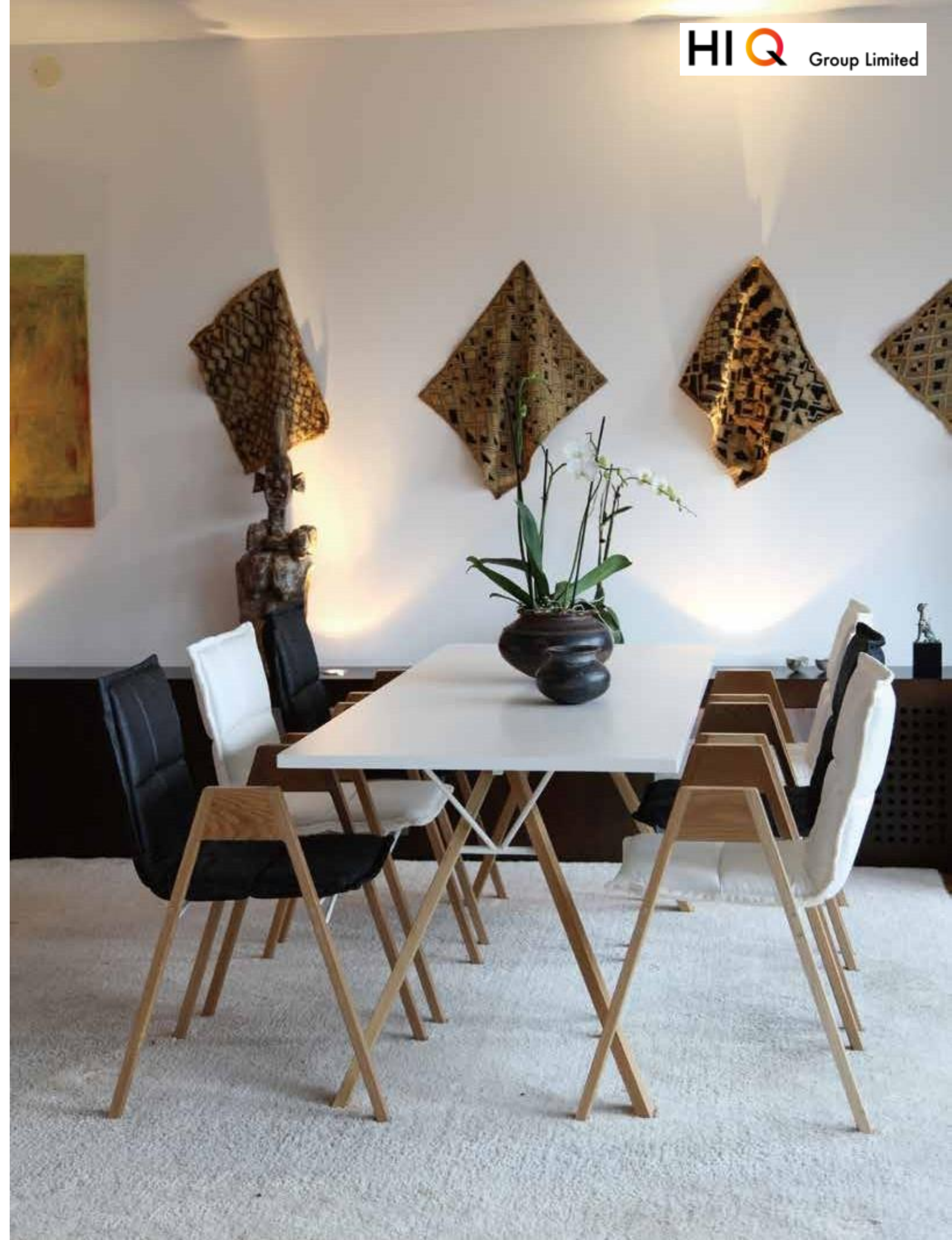
# LAB XL







Leg thickness 25mm



# LAB-L

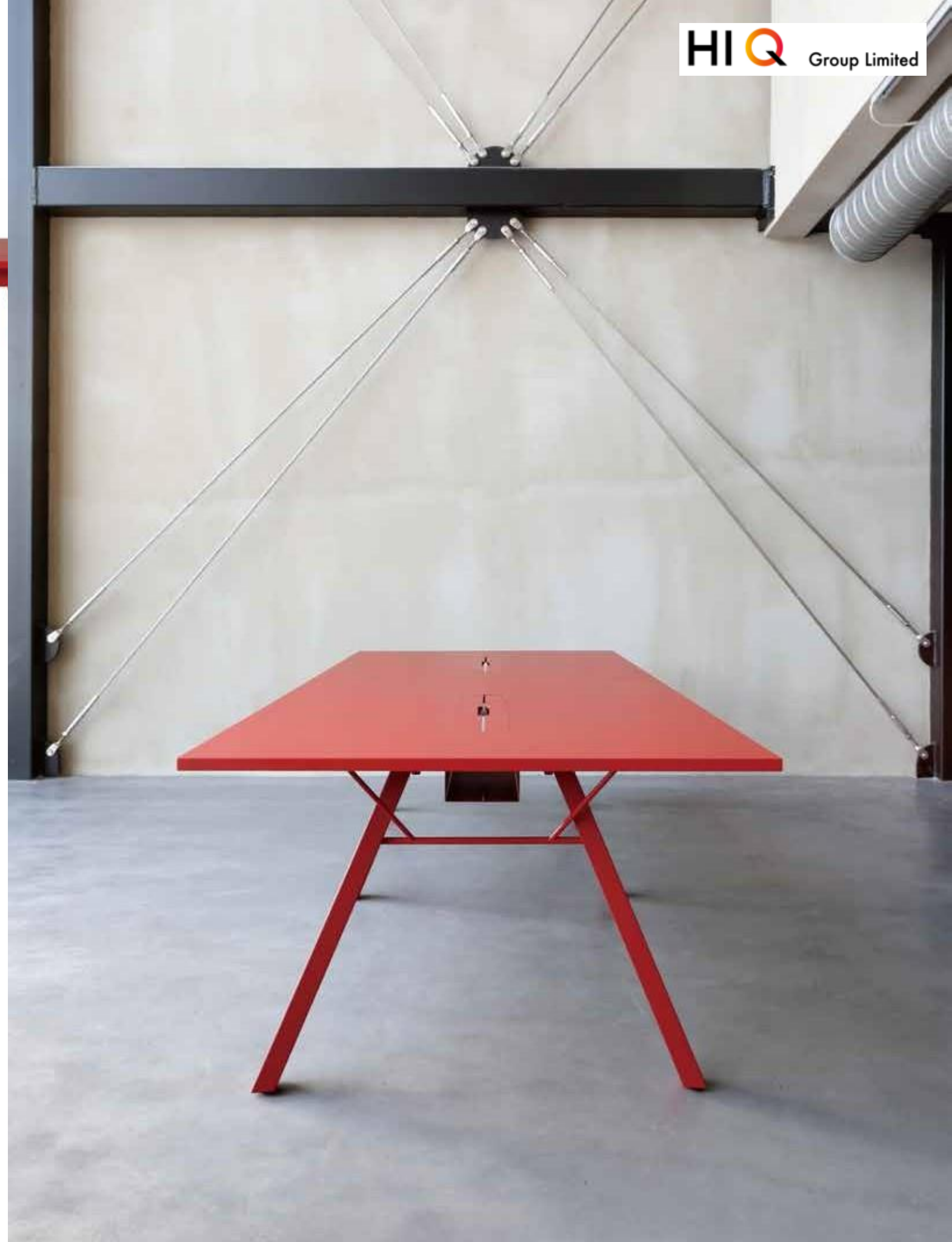


Lab table is a casual meeting or dining table, available as an individual or a modular version that can be extended endlessly.

Design: Harri Korhonen



Leg thickness 45mm







VERTICAL STACKING

Lab table and chair for casual meetings and cozy dining!

"We are happy to create something different and we're expected to do so."

It was challenging and pleasant to enter into a new kind of a conference environment, one where casualness is emphasized instead of representative look. To use wood as material felt natural in the current spirit as it's considered warm and positive. We still added a quilted loose cushion to strengthen the cozy effect. I was particularly satisfied that we managed to make a chair as comfortable as Lab to be vertically stackable."

Design: Harri Korhonen







LAB XOD



LAB ZTD





Lab Bar is continuation to the cozy convention of the Lab table and chair series. The softness of the chair has been created through a plain quilted seat. Lab Bar is available in two heights, accompanied with a high Lab table.

Design: Harri Korhonen



LAB BAR HIGH



LAB BAR TABLE

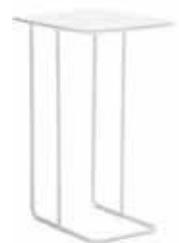
# BONDO



550x450x620



750x650x390



450x350x620



1200x650x390



750x650x390 / 1200x650x390

# B

Bondo table was originally designed as part of the Bondo sofa series. The light structure, beveled table top edge and soft shape create an aerial impression. The tables overlap each other slightly which allows for organic layouts. The table is available in five sizes including a small side table to be used as a laptop or writing table in groups that consists of sofas and armchairs.

Design: Harri Korhonen.





# BONDO



BONDOD-2



BONDOD-4



BONDOD-3



**B** Free form, solid, smooth, rounded, peaceful... From earlier lighter Bondo versions Bondo D is the new totally upholstered basic module for Bondo – the universally applicable lounge element for public and semipublic waiting areas. The range of compositions may vary from a bench or divan to a 2-seater sofa, thanks to the different shapes of the back elements. Bondo can be combined into different setups or lines or used as single seats. Design: Harri Korhonen.

# BOX WOOD



**B**ox Wood with wooden legs and soft appearance is a new version of the modular Box sofa system. The sofas and the benches that come in different widths and lengths are presented as part of the Cozy Office concept.

Design: Harri Korhonen



BOX W1R47



BOX W2R47



BOX W2R66E



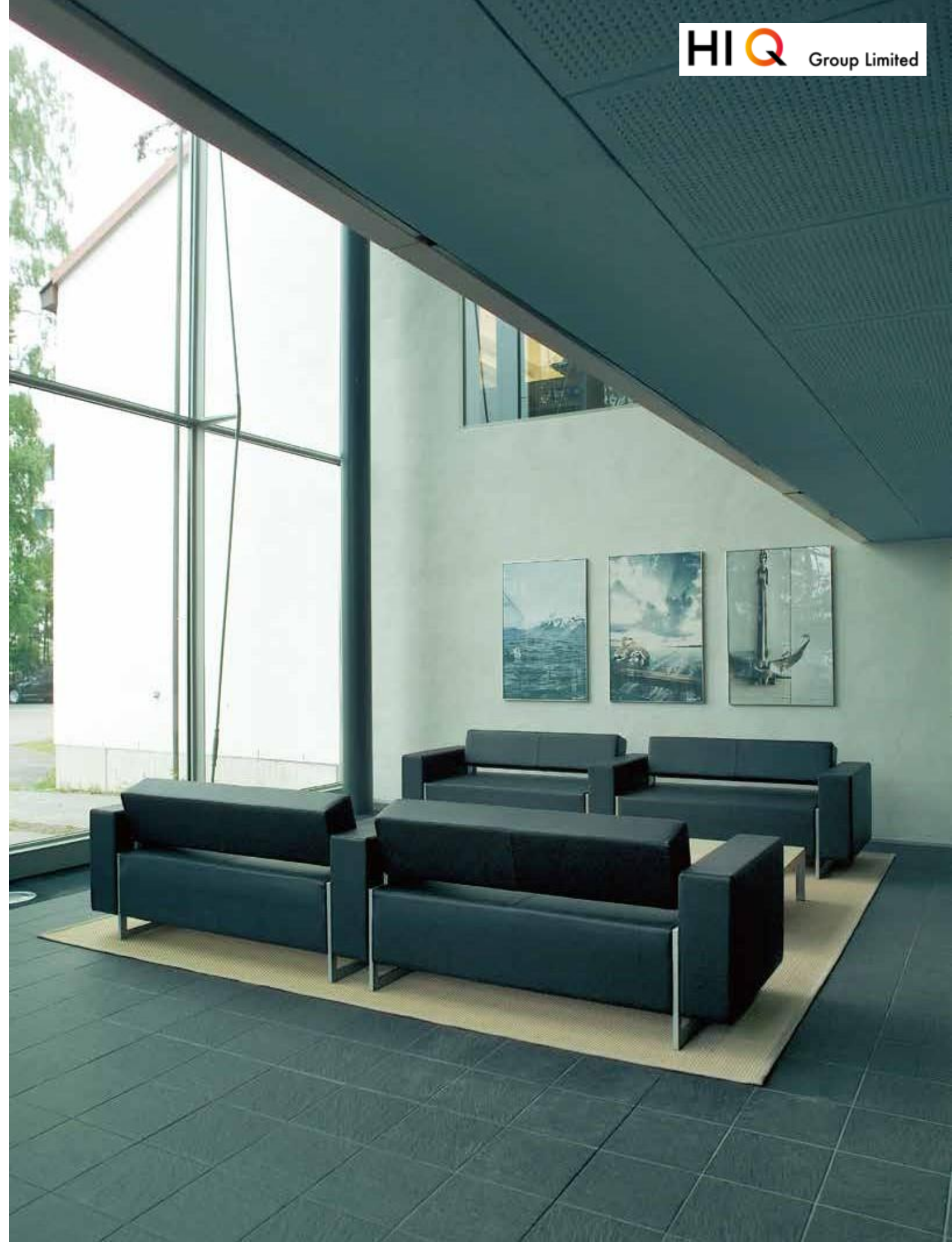


# BOX



**B**ox is a modular sofa available in 1-, 2- or 3-seater elements. Possibility to add arms and backrest. The elements are connectable.

Design: Harri Korhonen



BOX





IN-TENSIVE





# IN-TENSIVE



In-tensive is a forerunner of modular electrified meeting tables. First introduced back in 1998 in Nokia Research Center In-tensive has proven useful in meeting rooms all over the world. The modular structure, table tops in different shapes, sizes and materials and a large variety of leg versions make In-tensive suit both modern and classical interiors. All In-tensive tables have a spacious cable tray for easy cable management and different connections. For total range see separate brochure.

Design: Jouni Leino



IN-TENSIVE





# ADDCASE



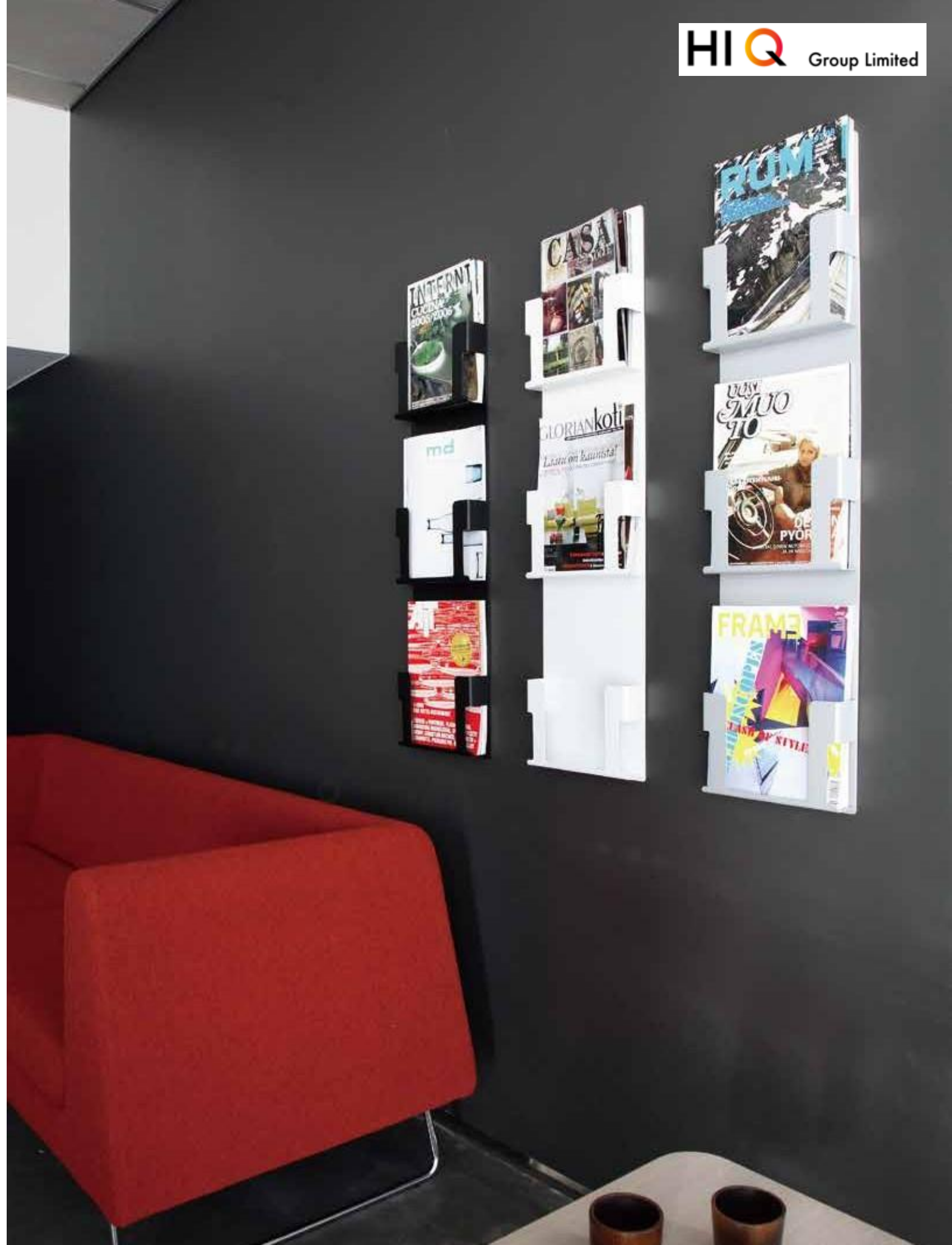
350x350x1476



52x230x1000

Aura sofa is accompanied with a sympathetic lounge chair. Mix the sofa and the chair together to form harmonious and cozy Aura groups or use the chair separately to form lower sitting groups. Also to be used as a side chair. The back of the Aura chair is slightly lower allowing more visibility.

Design: Mikko Laakkonen





**HIQ** Group Limited

Unit 2209, Kodak House II,

39 Healthy Street East, North Point, Hong Kong

Tel: (852) 2575 8966, Fax: (852) 2575 8633

Website: <http://www.hiq-group.com>

