

## Lively And Elegant

The exterior is a textured Mario mushroom design. Subtly blends beauty, form and function with simple lines.



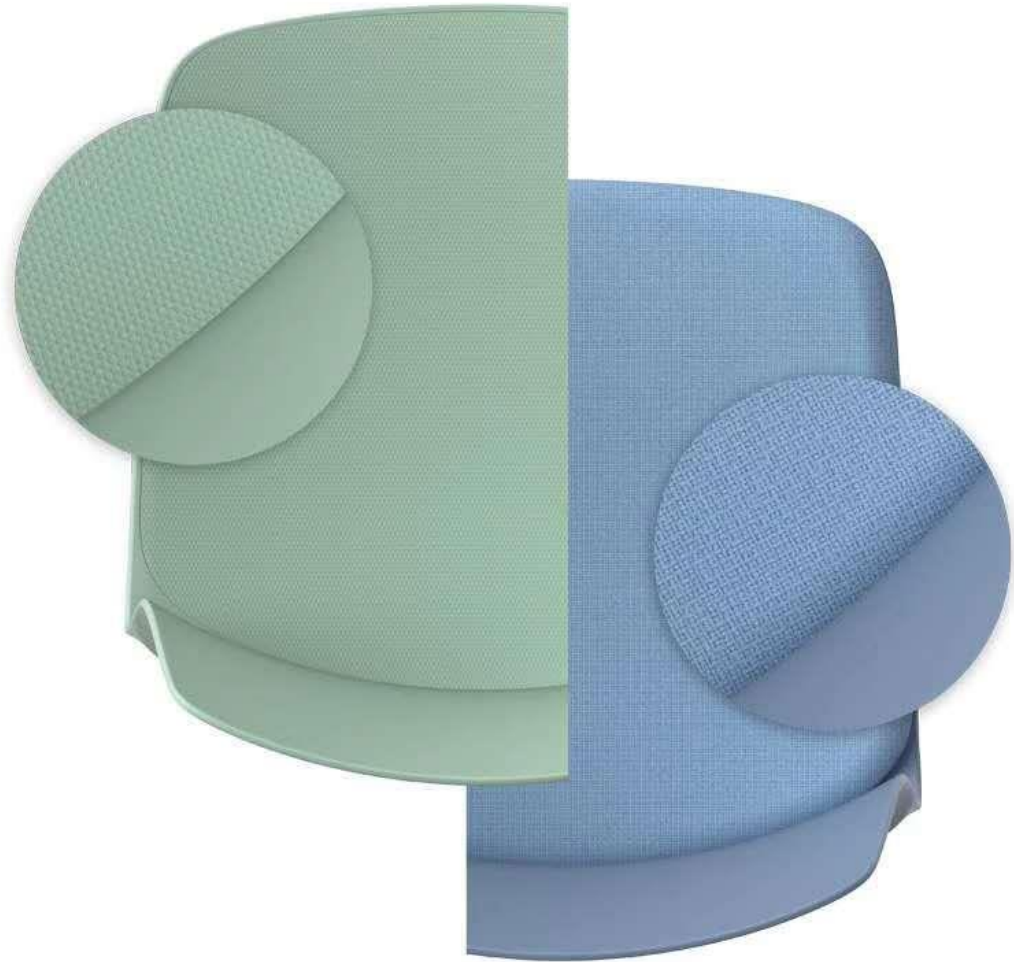


## Design Element

According to the mushroom's dot texture as the design element, add the lively element in the overall simple design

## Novel design and rigorous details

The delicate shell is available in 4 colors and can be configured with or without a cushion





Body has white, gray, green, blue four conventional colors, the form is elegant and lively, which can embellish different tonal space.



## **Flexible tablet**

Multi-function folding,  
convenient and more space saving







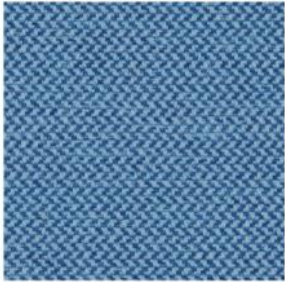


## Stackable Design Convenient storage

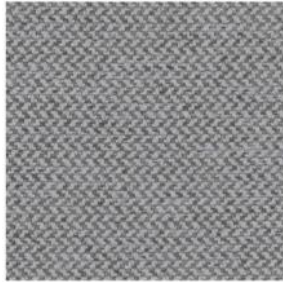
Elegant balance of concise lines and industrial aesthetic feeling. Convenient storage and easy to put, stack and take. Saving space.



## FABRIC OF EMS



HY-60010  
Sky Blue



HY-60011  
Grey



HY-60013  
Black



HY-60018  
Green



HY-60023-1  
Orange



**HIQ** Group Limited



Unit 2209, Kodak House II, 39 Healthy Street East, North Point, Hong Kong

Tel: (852) 2575 8966, Fax: (852) 2575 8633

Website: <http://www.hiq-group.com>